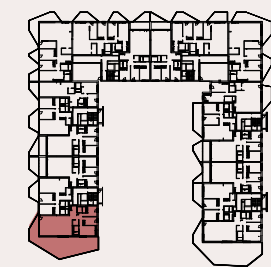
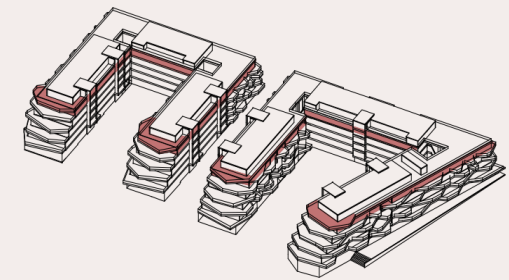
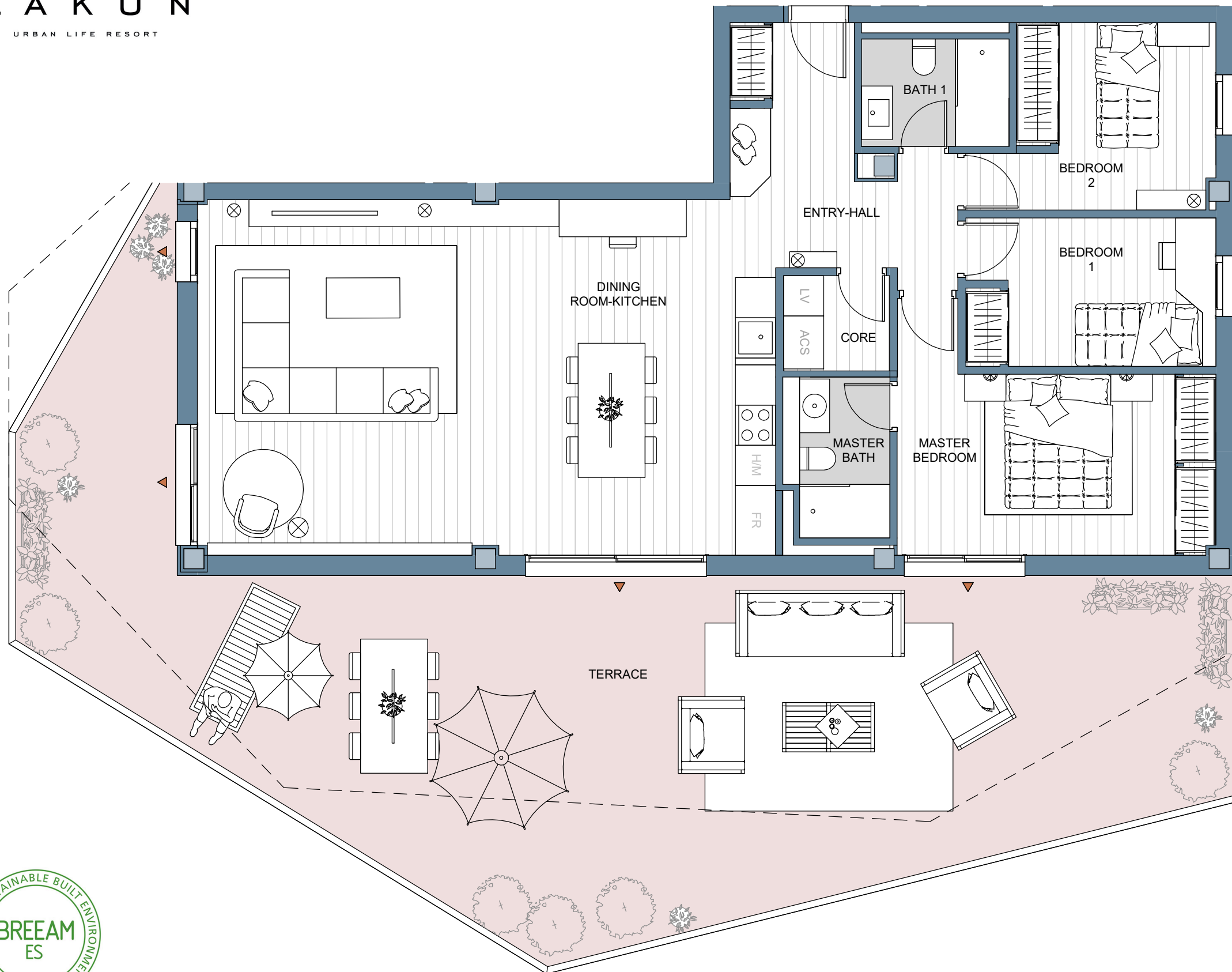


A



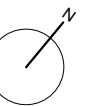
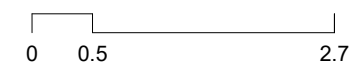
TOTAL LIVING AREA (m ²)	
BATH 1	3.52 m ²
BEDROOM 1	8.25 m ²
BEDROOM 2	8.88 m ²
CORE	2.24 m ²
DINING ROOM-KITCHEN	44.94 m ²
ENTRY-HALL	9.37 m ²
MASTER BATH	3.64 m ²
MASTER BEDROOM	13.83 m ²
	94.66 m ²
TERRACE	84.56 m ²
	84.56 m ²

	PROJECT AREA	DECREE 218/2005
INTERIOR LIVING AREA	94.67	
TERRACE LIVING AREA	84.56	
TOTAL LIVING AREA	179.23	104.14
INT CONST AREA + PP. CA	139.03	-
TERRACE CONSTRUCTED AREA	86.79	-
TOTAL CONSTRUCTED AREA	225.82	148.50

(Include proper constructed area, CA proportional part and terrace)



The information contained in this plans can be subject to changes until the end of the project. In case of disagreement between the comercial information and the information of the last project approved, it will attend always the last project approved.



BASIC DESIGN 03/12/2024