

VIVACE

CONTEMPORARY VILLAS

VILLA 26 | R273b

C/ EL SALVADOR 23

Bedrooms	3
Bathrooms	4
Parking	2 cars

Built Area	350,94 sqm
Covered Terraces	20,23 sqm
Uncovered Terraces	100,64 sqm
Pool Area	38,04 sqm
Parking Area	28,83 sqm

Total Covered Area	371,17 sqm
Total Garden Area	745,11 sqm
Plot Surface	1002,00 sqm

*All the surfaces detailed in this floor plan correspond to built areas.

The floor plan is not final as it has been designed in accordance with the Building Execution Project and, consequently, KORK S.L. reserves the right to include whatever changes due to technical and/or legal imperatives required by any public Administration or Agency. These changes, in any case, will be in accordance with the progress of the construction work. The accessory elements (for example, including the kitchen) are merely for illustrative purposes. The rotation sense of doors and the distribution of sanitary fittings are not binding. The surface areas shown are approximate and, may be altered for technical and/or legal reasons in the course of the construction work.

FIRST FLOOR



VIVACE

CONTEMPORARY VILLAS

VILLA 26 | R273b

C/ EL SALVADOR 23

Bedrooms 3
 Bathrooms 4
 Parking 2 cars

Built Area 350,94 sqm
 Covered Terraces 20,23 sqm
 Uncovered Terraces 100,64 sqm
 Pool Area 38,04 sqm
 Parking Area 28,83 sqm

Total Covered Area 371,17 sqm
 Total Garden Area 745,11 sqm
 Plot Surface 1002,00 sqm

*All the surfaces detailed in this floor plan correspond to built areas.

The floor plan is not final as it has been designed in accordance with the Building Execution Project and, consequently, KORK S.L. reserves the right to include whatever changes due to technical and/or legal imperatives required by any public Administration or Agency. These changes, in any case, will be in accordance with the progress of the construction work. The accessory elements (for example, including the kitchen) are merely for illustrative purposes. The rotation sense of doors and the distribution of sanitary fittings are not binding. The surface areas shown are approximate and, may be altered for technical and/or legal reasons in the course of the construction work.

DEVELOPED

KORK

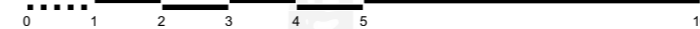
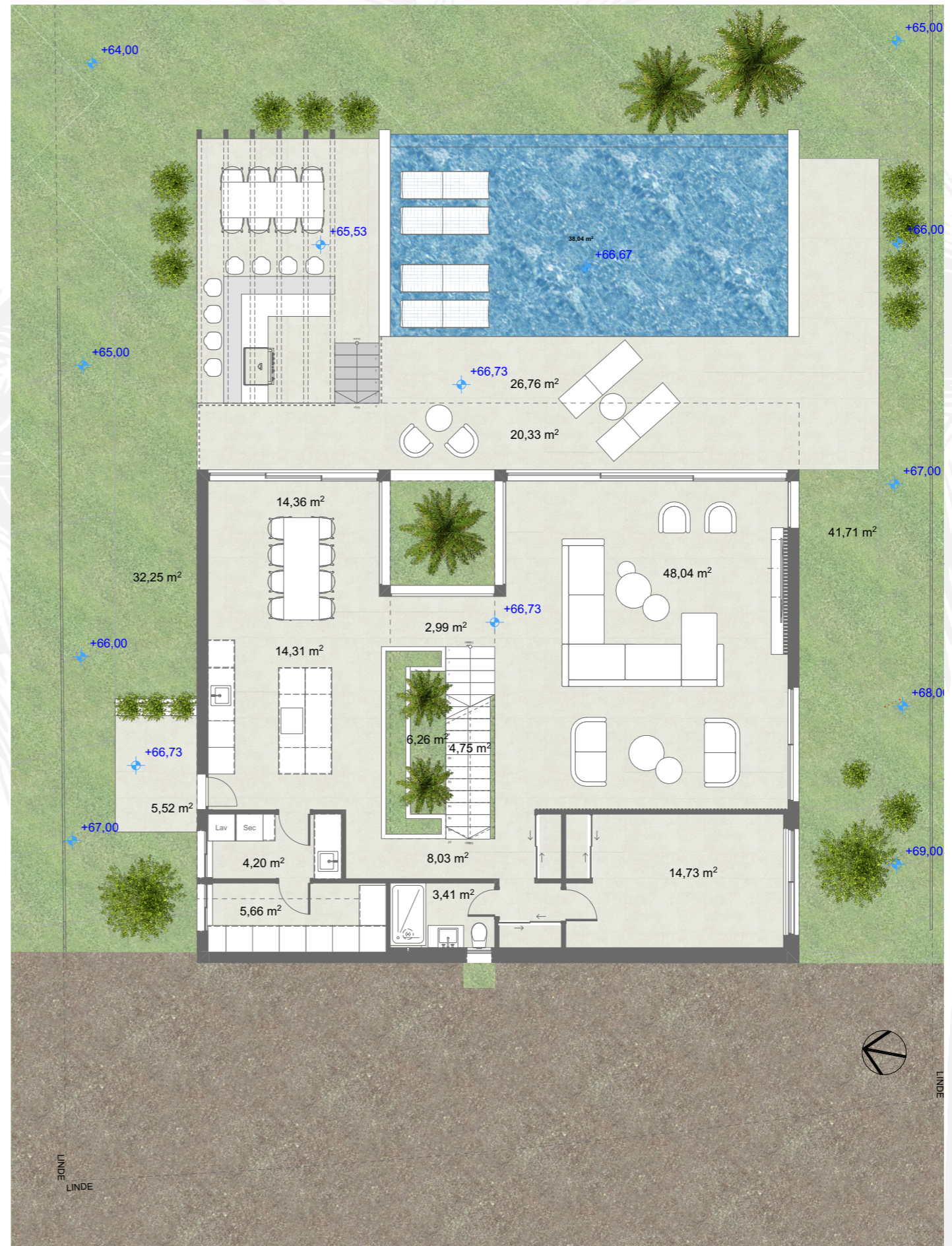
COMMERCIALIZED

Prime Invest

ARCHITECT

urbanika
concept living SL

GROUND FLOOR



VIVACE

CONTEMPORARY VILLAS

VILLA 26 | R273b

C/ EL SALVADOR 23

Bedrooms 3
 Bathrooms 4
 Parking 2 cars

Built Area 350,94 sqm
 Covered Terraces 20,23 sqm
 Uncovered Terraces 100,64 sqm
 Pool Area 38,04 sqm
 Parking Area 28,83 sqm

Total Covered Area 371,17 sqm
Total Garden Area 745,11 sqm
Plot Surface 1002,00 sqm

*All the surfaces detailed in this floor plan correspond to built areas.

The floor plan is not final as it has been designed in accordance with the Building Execution Project and, consequently, KORK S.L. reserves the right to include whatever changes due to technical and/or legal imperatives required by any public Administration or Agency. These changes, in any case, will be in accordance with the progress of the construction work. The accessory elements (for example, including the kitchen) are merely for illustrative purposes. The rotation sense of doors and the distribution of sanitary fittings are not binding. The surface areas shown are approximate and, may be altered for technical and/or legal reasons in the course of the construction work.

DEVELOPED

KORK

COMMERCIALIZED

Prime Invest

ARCHITECT

urbanika
concept living SL

BASEMENT

