

VIVACE

CONTEMPORARY VILLAS

VILLA 18 | R262

C/ EL SALVADOR, 36

| | |
|-----------|--------|
| Bedrooms | 3 |
| Bathrooms | 4 |
| Parking | 2 cars |

| | |
|--------------------|------------|
| Built Area | 248,25 sqm |
| Covered Terraces | 12,18 sqm |
| Uncovered Terraces | 89,14 sqm |
| Pool Area | 25,41 sqm |
| Parking Area | 32,79 sqm |

| | |
|---------------------------|-------------------|
| Total Covered Area | 260,43 sqm |
| Total Garden Area | 309,09 sqm |
| Plot Surface | 533,00 sqm |

*All the surfaces detailed in this floor plan correspond to built areas.

The floor plan is not final as it has been designed in accordance with the Building Execution Project and, consequently, KORK S.L. reserves the right to include whatever changes due to technical and/or legal imperatives required by any public Administration or Agency. These changes, in any case, will be in accordance with the progress of the construction work. The accessory elements (for example, including the kitchen) are merely for illustrative purposes. The rotation sense of doors and the distribution of sanitary fittings are not binding. The surface areas shown are approximate and, may be altered for technical and/or legal reasons in the course of the construction work.

DEVELOPED

KORK

COMMERCIALIZED

Prime Invest

ARCHITECTURE

urbanika
concept living SL

FIRST FLOOR



VIVACE

CONTEMPORARY VILLAS

VILLA 18 | R262

C/ EL SALVADOR, 36

Bedrooms 3
 Bathrooms 4
 Parking 2 cars

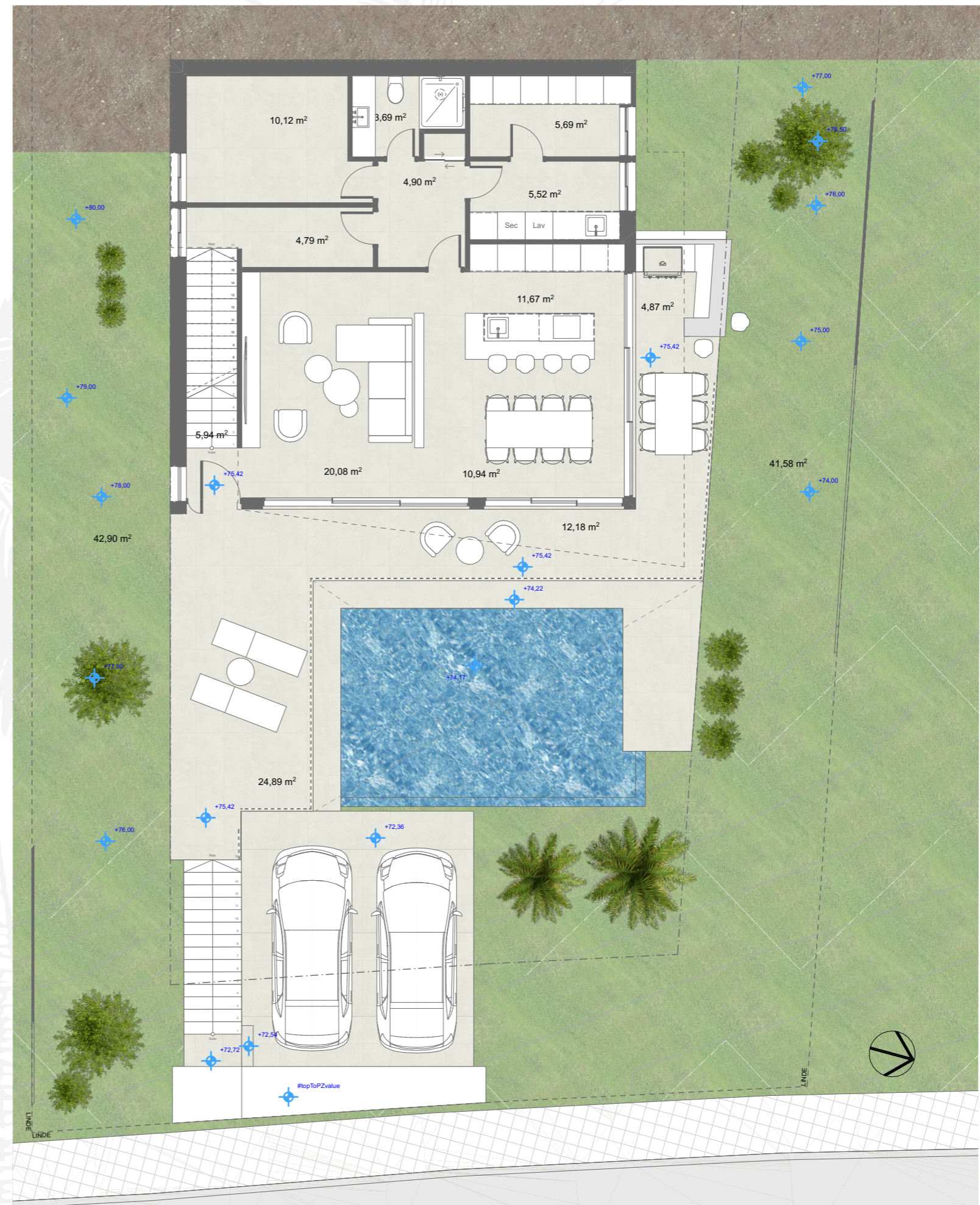
Built Area 248,25 sqm
 Covered Terraces 12,18 sqm
 Uncovered Terraces 89,14 sqm
 Pool Area 25,41 sqm
 Parking Area 32,79 sqm

Total Covered Area 260,43 sqm
 Total Garden Area 309,09 sqm
 Plot Surface 533,00 sqm

*All the surfaces detailed in this floor plan correspond to built areas.

The floor plan is not final as it has been designed in accordance with the Building Execution Project and, consequently, KORK S.L. reserves the right to include whatever changes due to technical and/or legal imperatives required by any public Administration or Agency. These changes, in any case, will be in accordance with the progress of the construction work. The accessory elements (for example, including the kitchen) are merely for illustrative purposes. The rotation sense of doors and the distribution of sanitary fittings are not binding. The surface areas shown are approximate and, may be altered for technical and/or legal reasons in the course of the construction work.

GROUND FLOOR



VIVACE

CONTEMPORARY VILLAS

VILLA 18 | R262

C/ EL SALVADOR, 36

| | |
|-----------|--------|
| Bedrooms | 3 |
| Bathrooms | 4 |
| Parking | 2 cars |

| | |
|--------------------|------------|
| Built Area | 248,25 sqm |
| Covered Terraces | 12,18 sqm |
| Uncovered Terraces | 89,14 sqm |
| Pool Area | 25,41 sqm |
| Parking Area | 32,79 sqm |

| | |
|---------------------------|-------------------|
| Total Covered Area | 260,43 sqm |
| Total Garden Area | 309,09 sqm |
| Plot Surface | 533,00 sqm |

*All the surfaces detailed in this floor plan correspond to built areas.

The floor plan is not final as it has been designed in accordance with the Building Execution Project and, consequently, KORK S.L. reserves the right to include whatever changes due to technical and/or legal imperatives required by any public Administration or Agency. These changes, in any case, will be in accordance with the progress of the construction work. The accessory elements (for example, including the kitchen) are merely for illustrative purposes. The rotation sense of doors and the distribution of sanitary fittings are not binding. The surface areas shown are approximate and, may be altered for technical and/or legal reasons in the course of the construction work.

DEVELOPED **KORK** COMMERCIALIZED **Prime Invest**

ARCHITECTURE **urbanika**
concept living SL

BASEMENT

